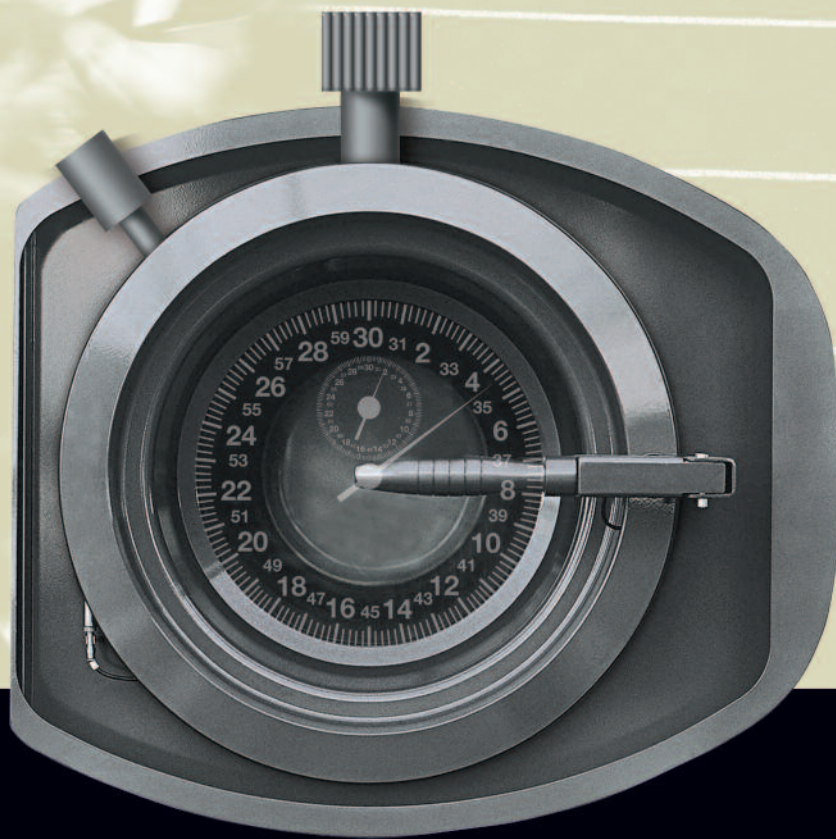


Fast. Smart. Clean.



UNION K Series

NOW THERE IS ONE SYSTEM
FOR ALL ALTERNATIVES!



The Ideal Drycleaning System For Alternative Solvents.



We know what it takes to be First.



Since its inception in 1976, Union has been the benchmark by which all other drycleaning systems are measured. We lead the field in high quality design and construction, incorporating continual advances in technology made possible by the industry's most creative and visionary research team.

The vast Union manufacturing and assembly complex in Bologna, Italy houses state-of-the-art research and development, high-tech inspection and CAD-based design facilities. Over 90% of machine components are made in-house to assure you the highest level of quality control in every Union product.

Today, Union Drycleaning Systems can be found in over 120 countries; sold and serviced by more than 370 factory-authorized dealers worldwide.

To keep abreast of the latest advances in product technology, Union sponsors periodic technical seminars and training courses for service personnel and drycleaners alike. In North America alone, Union Drycleaning Systems outnumber competitive brands by more than two-to-one.

At Union, we know what it takes to be first...and how to help your business be first at the finish line in drycleaning profits!

HISTORY

QUALITY

TECHNOLOGY

RESEARCH

INNOVATION

SAFETY

UNION K SERIES optimized for SYSTEMK4



The Ideal Drycleaning System For Alternative Solvents.

SYSTEM-K4 BY KREUSSLER

With SYSTEM-K4, Kreussler offers new possibilities and adds a new dimension to textile cleaning. The core of the new system is the SOLVONK4 solvent which, according to Kreussler, is an organic, completely biodegradable solvent, which does not irritate the eyes or skin.

As an indicator of its solution properties, SOLVONK4 has a KB-value of 75 which makes it ideal for textile cleaning.

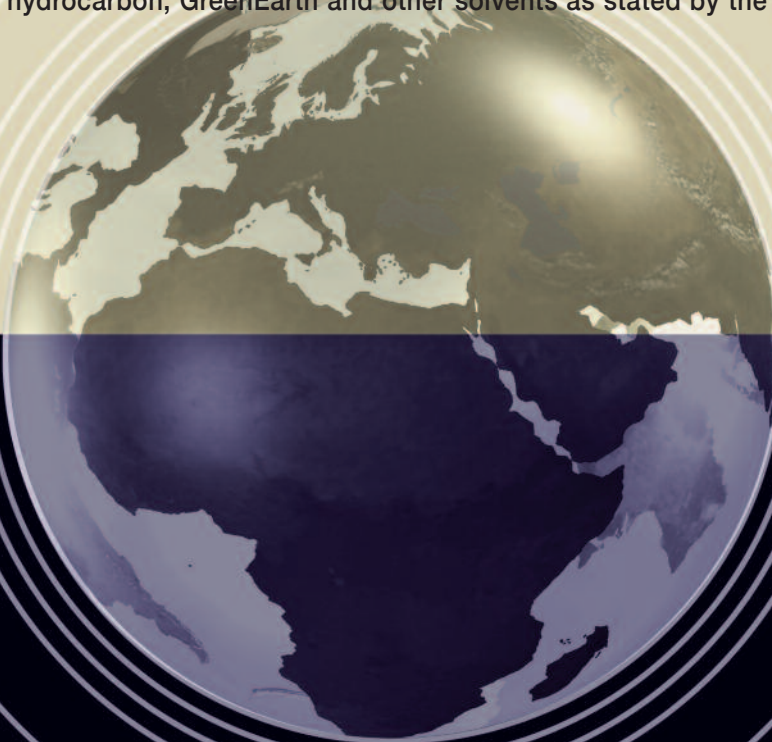
The synthesis of SOLVONK4 leads to a purity of more than 99% and is completely biodegradable.

Secondary properties of SOLVONK4 are also very attractive: practically no greying, no damage to colors, textiles are treated with great care and complete wet conditioning of the fibers results in an exceptionally good garment presentation after cleaning. This is not just true for textiles, but also when cleaning leather and furs.

Comprehensive cleaning results and best possible garment protection also apply.

Most leatherwear will not require re-greasing.

With Series K machines, UNION sets a new standard of cleaning with SYSTEM-K4 and offers a full line of specifically designed drycleaning machines in order to get the best from the K-4 system, hydrocarbon, GreenEarth and other solvents as stated by the manufacturer.



Advanced Technology for Greater Performance

Our new Dialog® Computer offers many different programs to handle virtually every cleaning need no matter which type of alternative solvent you choose! All programs can be customized onsite thanks to simple-write manual overrides.

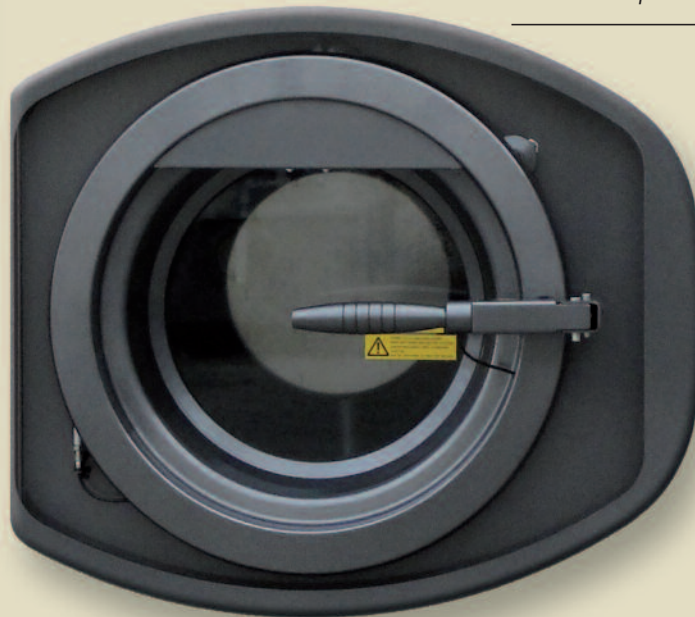
All system functions and program controls appear in the easy-to-read, quick-access call-up menu panel. Separate displays continuously monitor and show solvent temperature, outlet air temperature and inlet air temperature.

Exclusive Maintenance Man® feature keeps accurate, progressive accounts of operation performance and routine maintenance on a time/day/date basis. All data can be retrieved and logged into any PC desktop or laptop personal computer for easy record keeping.

Extra-large loading door features computer-controlled safety lock which prevents door opening until final cycle is completed and all vapor has been removed from the system. Newly designed basket maximizes temperature-controlled air throughout the load for faster, more efficient drying and cool-down. It also features automatic back-plate washdown and residual lint removal. New rim design keeps buttons and other objects from getting lodged between the door and inside rim.

New Union K Series Systems feature up-front filter (not available on model 8015) and temperature gauges for easy reading, front-access to primary controls and components, and illuminated sight-glasses in strategic locations for quick visual inspection.

Union's unique easy plug-in microchips let you expand the capabilities of the New Union K Series Systems. "Green" lets you upgrade software, "Red" enables you to download data direct to your PC, and "Blue" lets you copy programs from one machine to another.



Union Unleashes The Brain!

Dialog Plus® is the latest advance in computerized operation technology for drycleaning.

It is standard on every new Union K Series System! With Dialog Plus® you can run different multiple programs without having to change temperature settings or inverter drive speeds. Once the individual programs are entered, Dialog Plus® automatically remembers the settings for you. This allows you to run a program with standard temperatures and basket speeds, then switch to a delicates program with slower basket speed and lower solvent and drying temperatures without having to adjust the settings. Dialog Plus® also allows individual control for solvent, inlet and outlet air temperatures for each step in the cycle, and monitors and displays all temperatures in the system, including distilled solvent temperature and evaporator temperature. It even pauses a cycle until correct solvent and air temperatures for operation are attained, automatically controls soap and additive injections, and lets you quickly and simply modify or enlarge any segment of the program in use.

That's why we call it The Brain. You'll call it Indispensable!



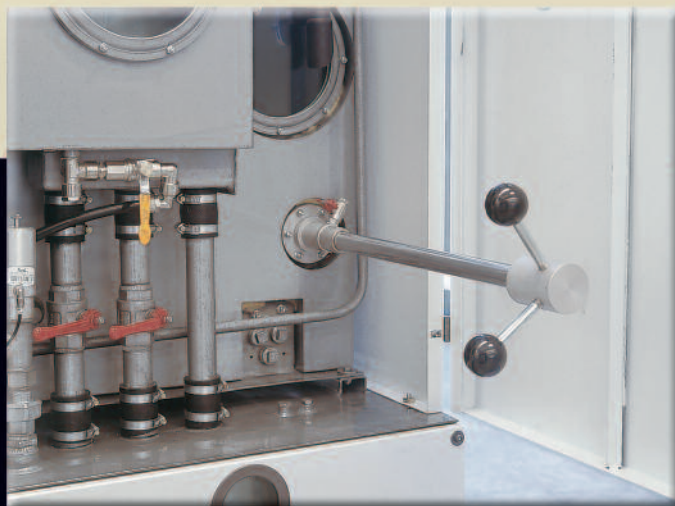
...Now One System Gives You Freedom of Solvent Choice!



Multiple, independently functioning high-micron self-cleaning spin disc EcoFilters® and large-capacity carbon cartridge filters are available on all Union K Series Systems to assure optimum filtration of both large and small particles for maximum solvent purity. Computer controls automatically pair filter operation for whites, darks or colors according to specific programs.

Union's optional Idromatic® Still Cleaning System completely removes sludge, lets you scrape* still interior floor, then automatically pumps out all residue for containerization and safe disposal...all without opening the still door so there is never any exposure to solvent fumes or waste. The still is then automatically sprayed with a fine jet of reclaimed solvent to assure a totally cleaned and purified chamber prior to refill.

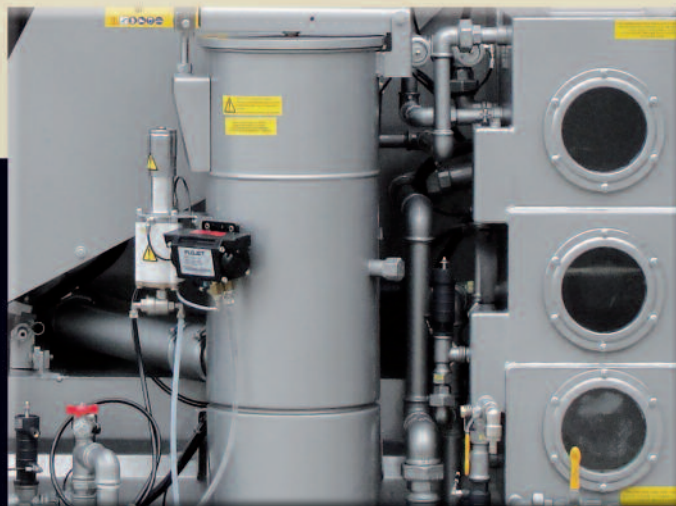
*Scrapper may not be available on SlimSpace models



For the new K Series drycleaning machines line Union has developed a new patented technology for an optimal drying. Optimal balance computer controlled cold air temperature and air flow are designed to capture the solvent vapors down to the lowest possible limit, to cut solvent emission and dry the garments perfectly. Full working details are available; easy-to-read freon gauges and digital display panels show cold air temperature. A new computer designed fridge coil assures best drying performances.

Union's high-efficiency, multi-stage inline water/solvent separation system assures maximum solvent quality control and purity. Large sight-glass lets you visually inspect levels at every stage of the separation process.

This multiple water separation system is designed for SOLVONK4 as well as hydrocarbon and silicone solvents.



The Ideal Drycleaning System For Alternative Solvents.

UNION HXL8015E-K, HXL8015S-K, HXP8015E-K

Fast. Smart. Clean.



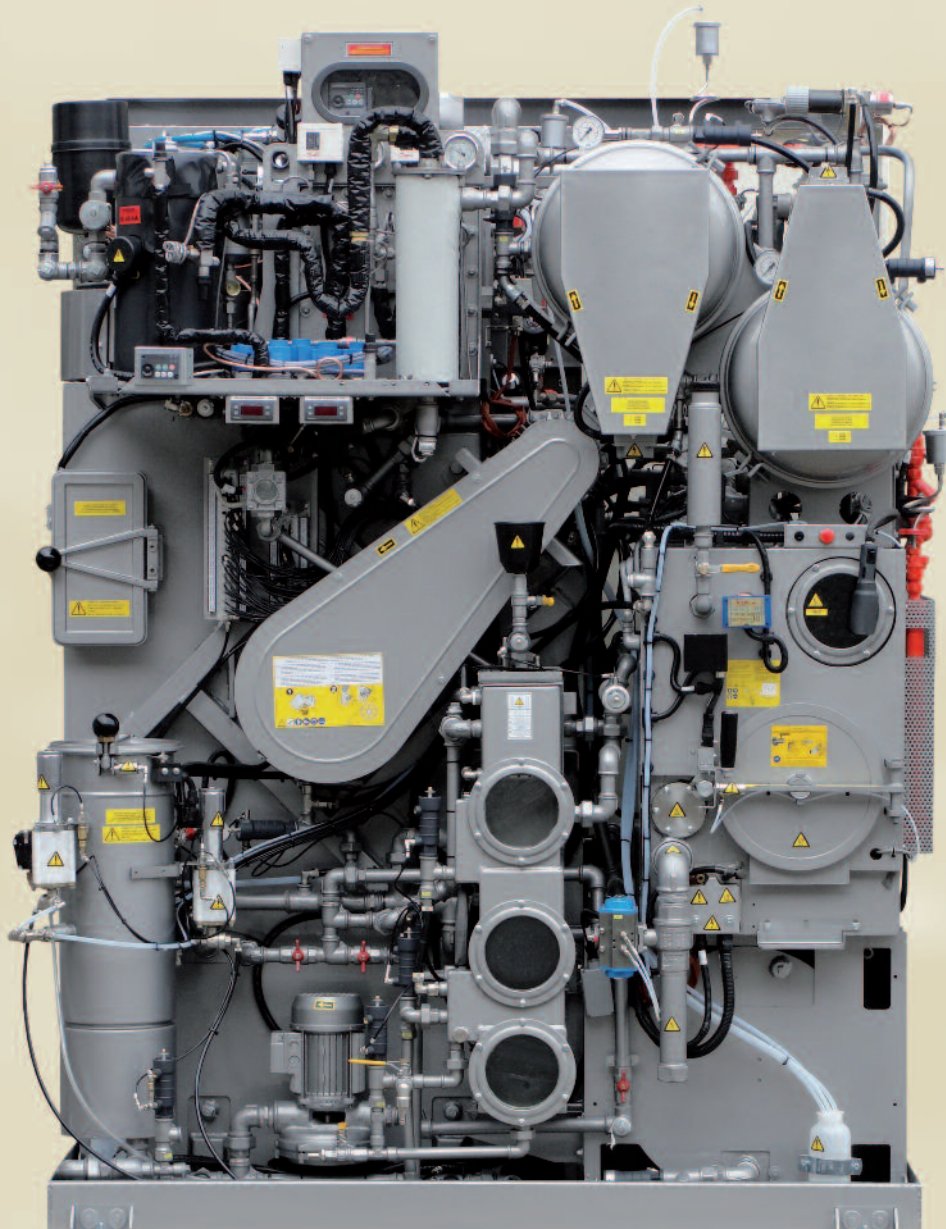
Exceptional cleaning, economy and ecological performance in 35 lbs loading capacities. Two or three independent fully automatic tanks. Available in slim or cross line configuration. Large access aluminum loading door.

All models feature a new electronic DRYING CONTROL system. DIALOG Computer with DIALOG PLUS®. Easy front access to the electrical panel, computer and distillation control components. Solvent temperature control system ARTIC LINE available on demand. New 'NEW TECH' cable system for easier access to electrical connected components. Industrial grade stainless steel and non-ferrous metals are used in all corrosion critical areas. Still & solvent overflow spillage protection within the heavy duty steel floor tray and a suction hose emptying facility. Horizontal electric panel, easily accessible, equipped with main switch. New air tunnel design optimized for SOLVONK4 as well as hydrocarbon, silicone, and other alternative solvents



UNION HXL8015E-K, HXL8015S-K, HXP8015E-K

Fast. Smart. Clean.



Logical, ergonomically designed for convenience having easy access to all maintainable components. This model includes multiple independent spin disc EcoFilters, carbon cartridge filters. There is convenient access to the oversized double lint filters and button trap, the Multi-stage H.C.S. gravitational water separator with a large sight-glass. These models are equipped with two or three independent solvent tanks with slanted bottoms, designed to prevent moisture and associated bacteria problems, with large front facing sight-glasses. All models of this range are equipped with INVERTER electronic controlled basket speed allowing choice of the ideal mechanical action. IDROMATIC® Still Cleaning & with the PNEUMO STILL® Waste Transfer System, incorporating quick-release coupled hoses and shut off valves, is available as an option. High-efficiency pumps and motors. ETL listed for USA and Canada, CE for European countries.



The Ideal Drycleaning System For Alternative Solvents.

UNION HP840-K, HP850-K, HL860K, HL840-K, HL850-K, HL860-K

Fast. Smart. Clean.

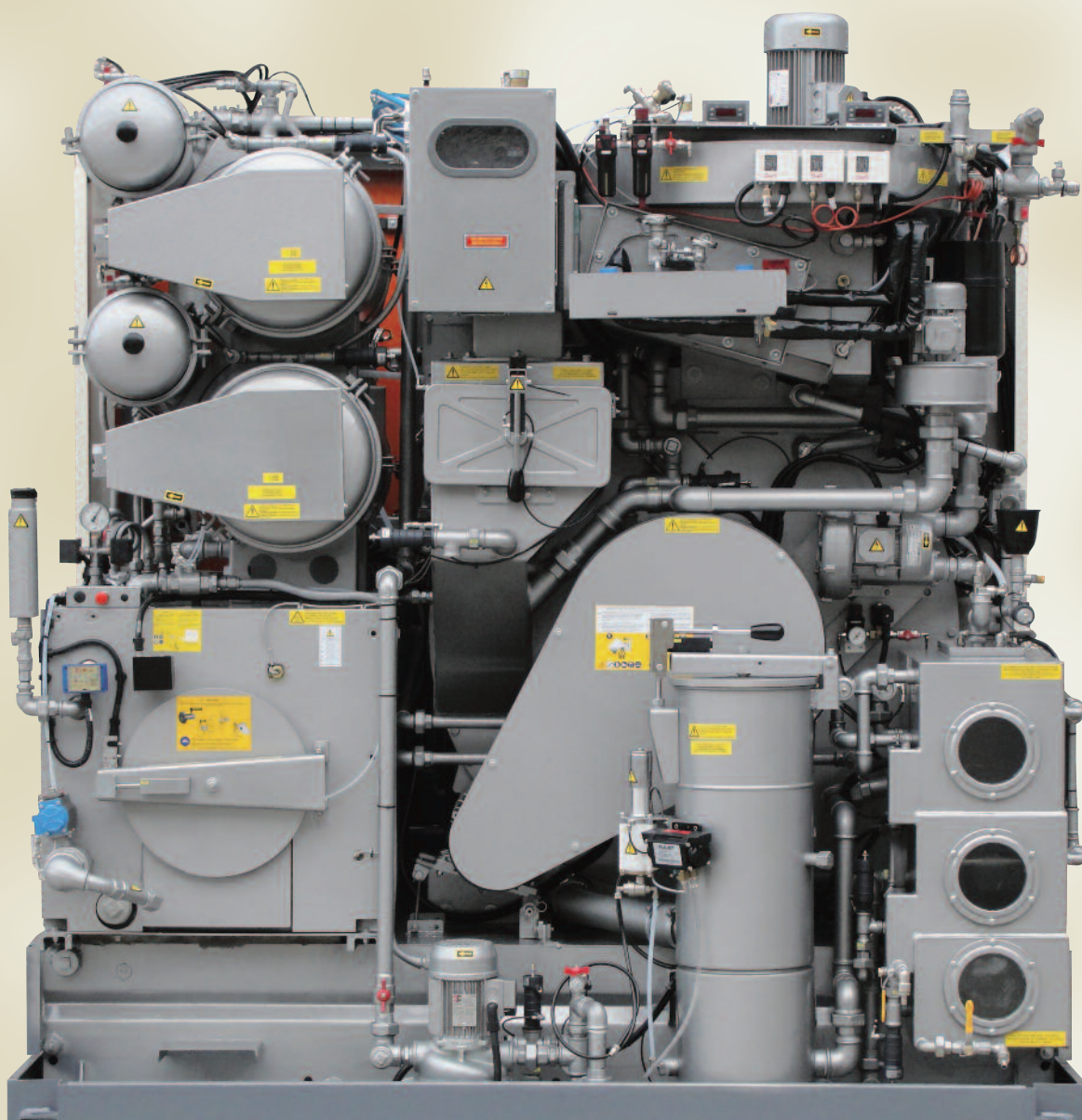


Models available with two or three solvent tanks, slim front and cross line design. Exceptional cleaning and ecological performance in 40, 50 and 60 lbs load capacities. Large-access loading door. Cyclonic Airflo® basket. Dialog® Computer with Dialog Plus®. Frontal digital solvent/air temperature display panels. Frontal analogue filter gauges. Easy front access to electronics, computer and still control components. All models of Series K are equipped with two or three independent self-cleaning solvent tanks equipped with level control sight-glasses. All models of Series K are multi-solvent, designed to get the best from the SYSTEMK4 as well as hydrocarbon and silicon solvent. ACTIVA spray system available as optional for special cleaning processes.



UNION HP840-K, HP850-K, HL860K, HL840-K, HL850-K, HL860-K

Fast. Smart. Clean.



Logical, and ergonomically designed for convenient, easy access to all components for quick maintenance. Multiple, independent spin disc EcoFilters® and carbon cartridge filters. Convenient access to oversized double lint filters and button trap. Extra-large Turbo 2® Fan and modular refrigeration system. Multi-stage gravitational water separator with sight-glasses. Optional Idromatic® with Pneumo Still® Still Cleaning System. Quick-disconnect hoses. Easily accessible piping, fittings and quick cut-off valves. High-efficiency pumps. Industrial grade stainless steel and brass in all critical areas. Still overflow protection and heavy-duty steel containment base. 24-volt computer circuitry. Unique UNIJET high pressure solvent injection for better cleaning performance.



The Ideal Drycleaning System For Alternative Solvents.

UNION HL880-K, HL890-K

Fast. Smart. Clean.



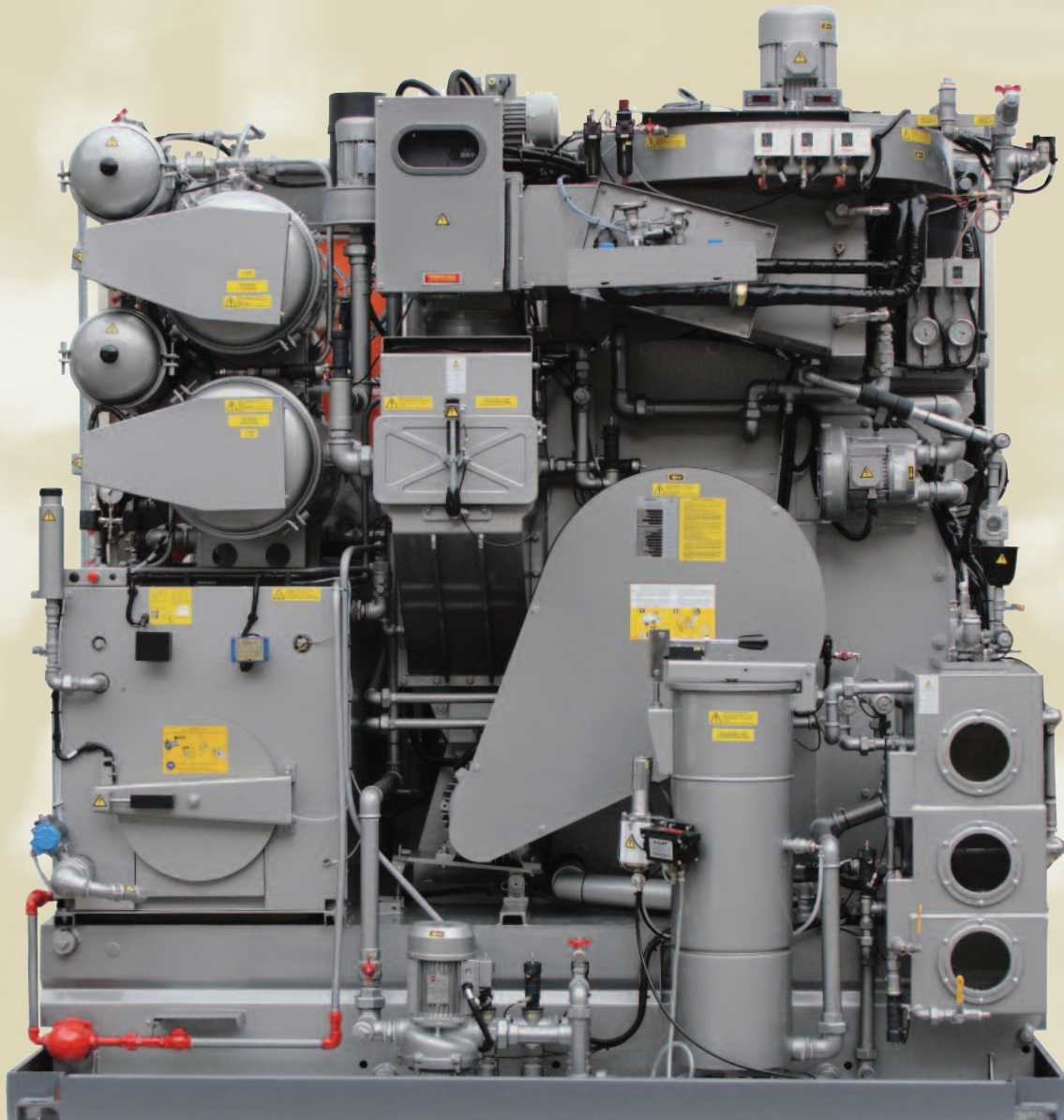
The top models of the K Series are available with three self-cleaning solvent tanks and multiple filter circuits. Exceptional cleaning and ecological performance in 80 and 90 lbs load capacities. Large-access loading door on model HL880-K, extra large loading door on model HL890-K. Cyclonic Airflo® basket. Dialog® Computer with Dialog Plus®. Front digital solvent / air temperature display panels. Front analog filter gauges. Easy front access to electronics, computer and still control components. Front still scraper access door. Illuminated front sight-glasses for still and basket solvent washdown inlet. Three independently controlled solvent holding/transfer tanks with Sensor Plus® to prevent solvent foaming and bacteria growth, slanted base and illuminated sight-glasses. 24-volt computer circuitry. All electronic components ETL-listed (for North America) or CE Standard.



The Ideal Drycleaning System For Alternative Solvents.

UNION HL880-K, HL890-K

Fast. Smart. Clean.



Logical, ergonomically designed for convenient, easy access to all components for quick maintenance. Multiple, independent spin disc EcoFilters® and carbon cartridge filters. Convenient access to oversized double lint filters and button trap. Extra-large fan and refrigeration unit. Multi-stage gravitational water separator with sight-glasses. Modular designed refrigeration system.

Pneumo Still® Still Cleaning System (optional). Quick-disconnect hoses. Easily accessible piping, fittings and quick cut-off valves. High-efficiency pumps. Industrial grade stainless steel and brass in all critical areas. Still overflow protection and heavy-duty steel containment base.



The Ideal Drycleaning System For Alternative Solvents.

Technical Specifications

		HXP8015E-K	HXL8015E-K	HXL8015S-K	HP840-K	HP850-K	HP860-K	HL840-K	HL850-K	HL860-K	HL880-K	HL890-K
LOAD CAPACITY	Lbs	35	35	35	40	45 ÷ 50	55 ÷ 60	40	45 ÷ 50	55 ÷ 60	75 ÷ 80	90 ÷ 95
BASKET												
Volume	cu.ft.	10.1	10.1	10.1	12	14.1	17.7	12	14.1	17.7	22.8	28.3
Diameter	inches	31.5	31.5	31.5	35.4	39.4	39.4	35.4	39.4	39.4	47.3	47.3
Depth	inches	22	22	22	21	20	25.2	21	20	25.2	22.5	28
Wash speed	rpm	20-55	20-55	20-55	12 ÷ 50	12 ÷ 50	12 ÷ 50	12 ÷ 50	12 ÷ 50	12 ÷ 50	12 ÷ 50	12 ÷ 50
Extract speed	rpm	300-500	300-500	300-500	300 ÷ 540	300 ÷ 540	300 ÷ 540	300 ÷ 540	300 ÷ 540	300 ÷ 540	300 ÷ 450	300 ÷ 450
Door opening	inches	20	20	20	20	20	20	20	20	20	20	23.6
TANKS												
Useful volume tank 1	gal	28	28	28	25	29	32	29	42	42	63	63
Useful volume tank 2	gal	28	28	28	40	44	47.5	29	42	42	63	63
Useful volume tank 3	gal	-	-	32	-	-	-	53	53	53	87	87
STILL												
Useful Still Volume at half inspection	gal	38	38.3	38.3	50	50	50.2	50	68	68	95	95
Total Still Volume	gal	43.3	47.6	47.6	60	60	59.4	60	86	86	120	120
NYLON FILTER												
Volume nylon filter housing	gal	9.2	9.2	9.2	14.5	14.5	14.5	14.5	20	20	20	26.4
Nylon filter area	ft²	22.6	22.6	22.6	42	42	42	42	59	59	59	84
Filter disks	nr	14	14	14	26	26	26	26	39	39	39	52
PURITAN FILTER												
Volume Puritan filter housing	gal	3.5	3.5	3.5	3.5	3.5	3.5	6.6	6.6	6.6	6.6	6.6
Tubes numbers	nr	1	1	1	1	1	1	1	1	1	1	1
Cartridges quantity	nr	1	1	1	1	1	1	2	2	2	2	2
DUAL CARTRIDGE FILTER												
Volume Dual cartridge filter housing	gal	9.2	9.2	9.2	14.5	14.5	14.5	14.5	22.5	22.5	22.5	27.8
Tubes numbers	nr	1	1	1	1	1	1	1	1	1	1	1
Cartridges quantity	nr	1	1	1	2	2	2	2	3	3	3	4
ELECTRIC POWER (220V 3ph 60Hz)												
Wash / Extract motor - with Inverter *	Hp	4	4	4	4,7	7.5	7.5	4,7	7.5	7.5	8.1	8.1
Solvent pump motor	Hp	0.75	0.75	0.75	1	1	1	1	1	1	1.5	1.5
Fan motor	Hp	2	2	2	3.5	3.5	3.5	3.5	3.5	3.5	5.5	5.5
Refrigerator compressor	Hp	3.35	3.35	3.35	5	6.5	6.5	5	6.5	6.5	6.5	6.5
Nylon filter motor	Hp	0.75	0.75	0.75	0.75	0.75	0.75	0.75	0.75	0.75	0.75	0.75
Vacuum Pump Motor	Hp	0.5	0.5	0.5	0.5	0.5	0.5	0.5	0.5	0.5	0.5 x 2	0.5 x 2
Blower for button trap drying	Hp	0,75	0,75	0,75	0,75	0,75	0,75	0,75	0,75	0,75	0,75	0,75
Loading door suction	Hp	-	-	-	0,18	0,18	0,18	0,18	0,18	0,18	0,18	0,18
Working power (STEAM MACHINE)	Kw	6,5	6,5	6,5	9	11	11	9	11	11	14.5	14.5
CONNECTIONS SUPPLY												
Compressed air inlet	Ø	1/4"	1/4"	1/4"	1/4"	1/4"	1/4"	1/4"	1/4"	1/4"	1/4"	1/4"
Water inlet	Ø	3/4"	3/4"	3/4"	1"	1"	1"	1"	1"	1"	1"	1"
Water outlet	Ø	3/4"	3/4"	3/4"	1"	1"	1"	1"	1"	1"	1"	1"
Steam Still and heater inlet	Ø	1/2"	1/2"	1/2"	1/2"	1/2"	1/2"	1/2"	1/2"	1/2"	1/2"	1/2"
Condensat Still and heater outlet	Ø	1/2"	1/2"	1/2"	1/2"	1/2"	1/2"	1/2"	1/2"	1/2"	1/2"	1/2"
MACHINES WEIGHTS												
Empty machine weight	lbs	2690	2910	2954	3728	4012	4189	4035	4630	4805	6260	6503
Machine weight with solvent	lbs	3164	3386	3637	4264	5220	4839	5269	5865	6050	7980	8223
Static charge on the floor with solvent	lbs/ft²	144	149	160	147	172	154	158	146	150	155	160
Dynamic charge on the floor (+10%)	lbs/ft²	216	219	231	229	269	266	208	221	242	234	255
MACHINES DIMENSIONS												
(A) Width front Machine	inches	39.4 + 4.8	61.4 + 6	61.4 + 6	49.2 + 3.9	51.2 + 3.9	51.2 + 3.9	78.7 + 3.9	84.3 + 3.9	84.3 + 3.9	93 + 4.7	93 + 4.7
(B) Depth	inches	86.6	57.1 + 2.4	57.1 + 2.4	85	85.5	90.6	61	68.5	68.5	79.8	79.8
(C) Height With Fan	inches	83.7	83.7	83.7	87	92.1	92.1	86.4	90	90	101.6	101.6
(D) Height Without Fan	inches	-	-	-	80,3	82,5	82,5	79,7	82,5	82,5	92,3	92,3

*Power changes accordingly to use of the machine

Note: Acoustic emission level of the machines is lower than 70 dB (A)

Specifications subject to change without notice



UNION DRYCLEANING PRODUCTS USA
1900 Meredith Park Dr.
McDonough, GA 30253
Tel: 1.800.433.9401 - Fax: 404.361.2454
E-mail: info@uniondc.com
Web page: www.uniondc.com